

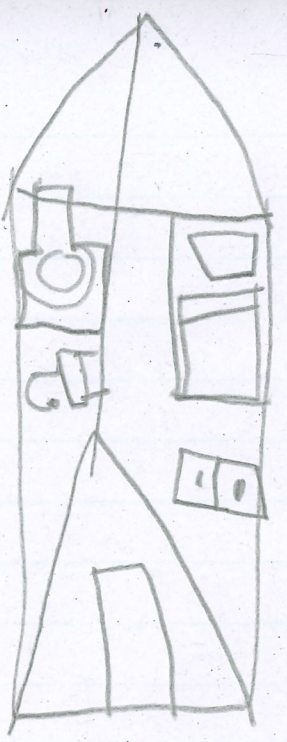
17.7.23

Evaluation

My ideas were having lots of furniture and for it to be a cuboid, I reinforced it by using long poles to stop it from wabbling side to side. In this process I had to alter my roof so the rain pours off it instead of just letting it fall. If I were to do this again I would do it differently. The way I used lots of hot glue and use a different way to re-reinforce it.

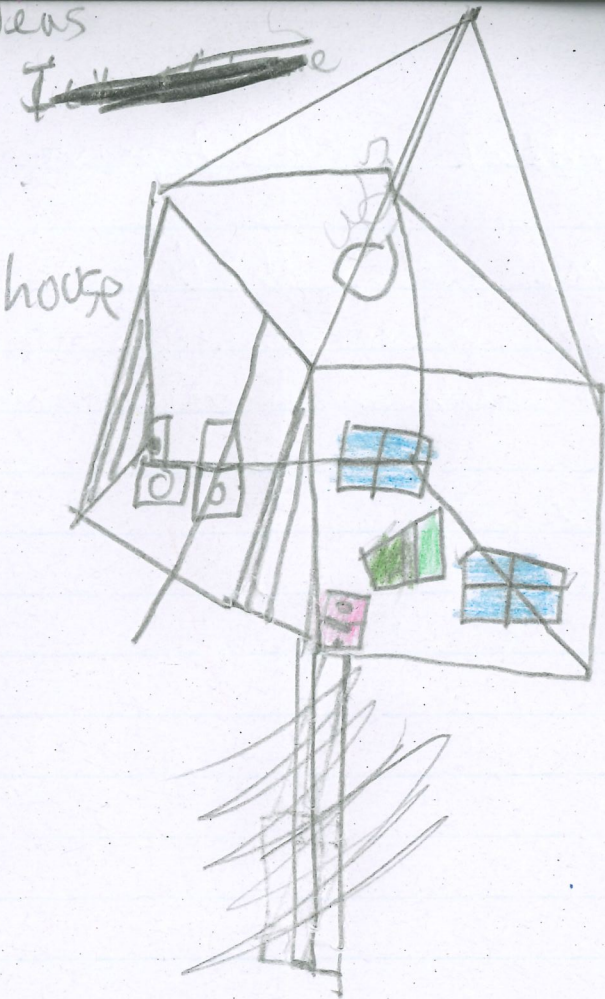


critical ideas



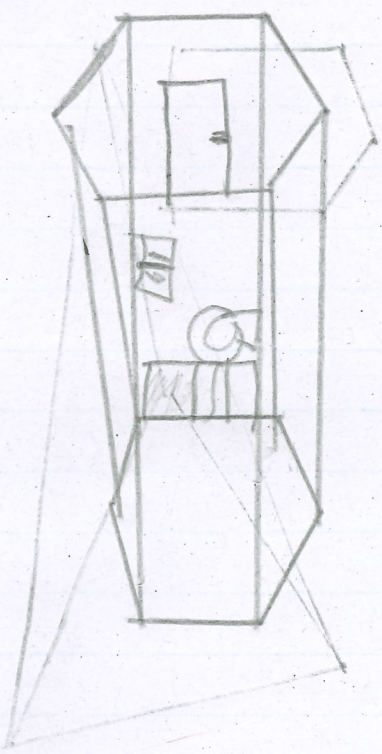
Tent

house

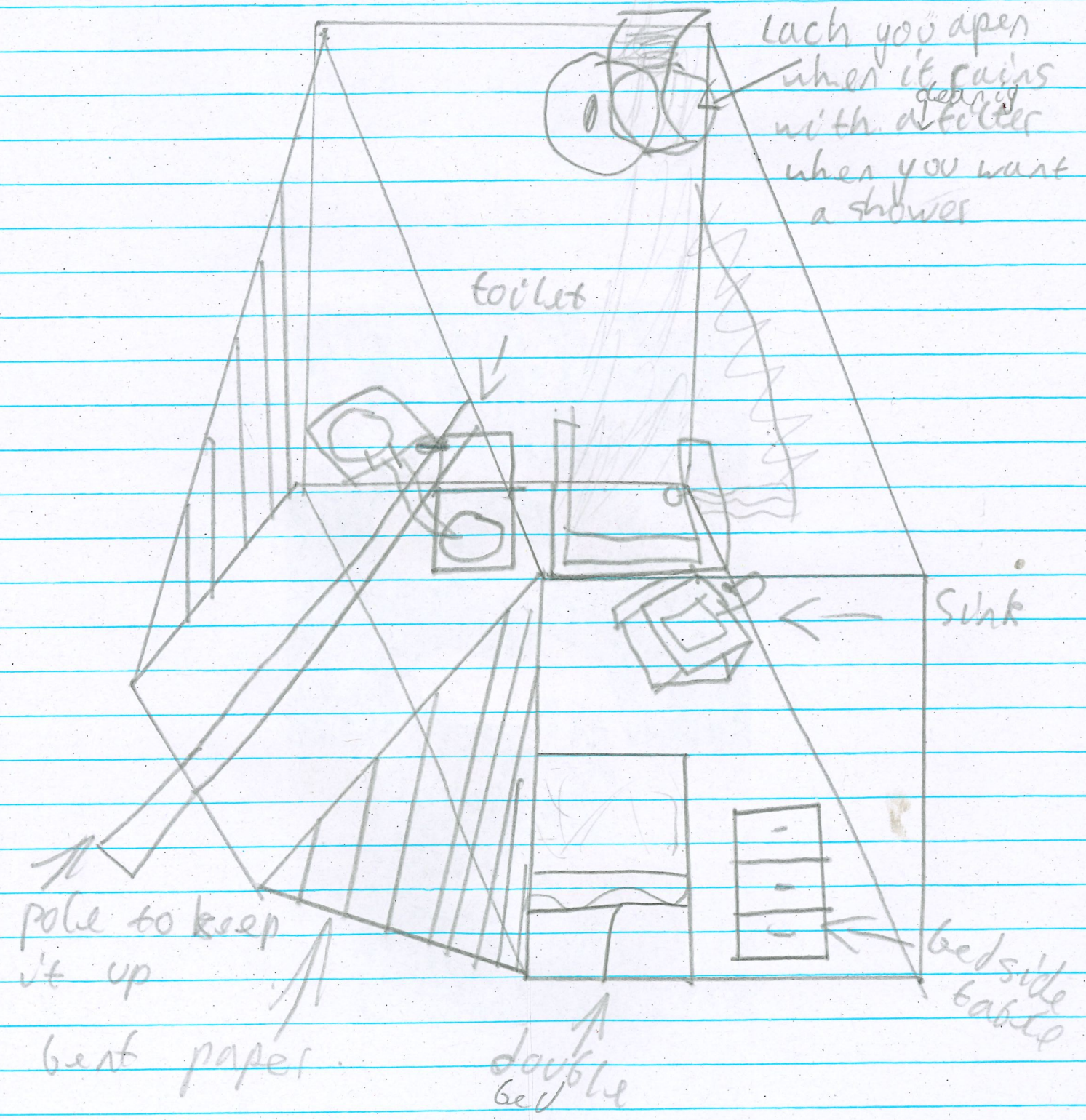
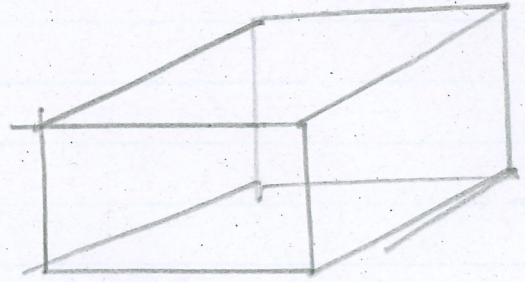
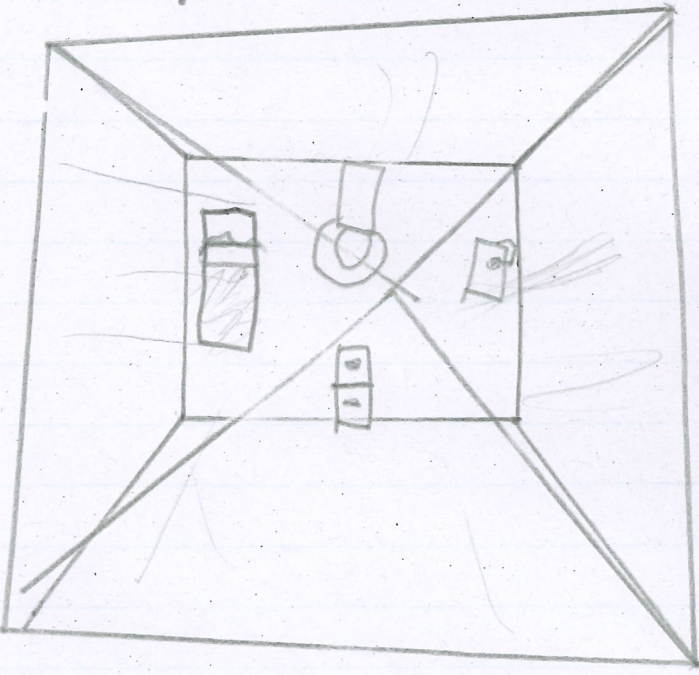


~~tent~~

pentagonal pyramid



?



each you open when it rains with a filter when you want a shower

toilet

sink

bedside table

double bed

pole to keep it up

bent paper